



MO-SCI Specialty Products, L.L.C.

A Subsidiary of MO-SCI Corporation

4040 HyPoint North

Rolla, MO 65401

Telephone: 573-364-2338

Fax: 573-364-9589

GL0179 DATA SHEET

Appearance

Solid clear borosilicate glass microspheres with white color in powder form.

Chemical Composition

Silica (SiO₂)70 - 85 Wt%

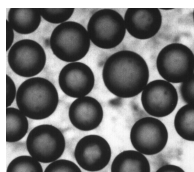
Boron oxide (B₂O₃) 10 - 15 Wt%

Sodium oxide (Na₂O) 5 - 10 Wt%

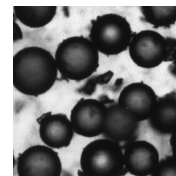
Aluminum oxide (Al₂O₃) 2 - 5 Wt%

Physical Properties

Specific Gravity	2.2 g/ cm ³
Bulk Density of Dry Beads.....	1.2 g / cm ³ (71 lbs/ ft ³)
pH in water @ 25 °C	7.0
Softening Temperature	830 °C
Index of Refraction	1.47 - 1.48 _{n_D}
Coefficient of Thermal Expansion...	32 x 10 ⁻⁷ / °C at 30 to 300 ° C
Crush Strength (90% Survival).....	27,210 psi using Carver Hydraulic Press



Uncrushed



Crushed

Applications

Typical applications of GL0179 beads including calibration, high temperature spacer material for gauge control, coating, filler for plastic and etc.