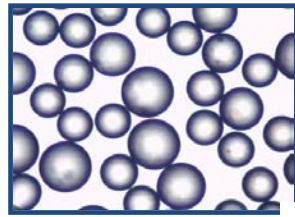


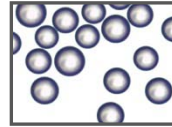
## PRICE LIST

### Engineering Grade Glass Spheres (Class IV)

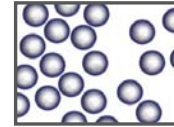


Class IV

Other Options Available



Class V



Class VI

Minimum Order: \$1,000.00 - Minimum Line Item purchase is \$250 /USD

Items can be combined to meet minimum order.

Specifications and Prices:

Size: ≥ 80% in Range

Spherical percentage: ≥ 85% Spherical

Composition: 1.5 Refractive Index Soda-lime Glass

Part Number	Sieve Mesh Size	Size Range (mm)	Size Range (in)	Price Per lb 1-499 lbs	Price Per lb ≥500 lbs	Minimum Order Quantity
GL0191B4/600-850	-20+30	0.850-0.600	.0331 - .0232	\$6.50	\$5.85	40 lbs.
GL0191B4/425-600	-30+40	0.600-0.425	.0232 - .0165	\$6.50	\$5.85	40 lbs.
GL0191B4/355-500	-35+45	0.500-0.355	.0197 - .0138	\$6.50	\$5.85	40 lbs.
GL0191B4/300-425	-40+50	0.425-0.300	.0165 - .0117	\$6.50	\$5.85	40 lbs.
GL0191B4/250-355	-45+60	0.355-0.250	.0138 - .0098	\$6.50	\$5.85	40 lbs.
GL0191B4/212-300	-50+70	0.300-0.212	.0117 - .0083	\$6.50	\$5.85	40 lbs.
GL0191B4/180-250	-60+80	0.250-0.180	.0098 - .0070	\$6.50	\$5.85	40 lbs.
GL0191B4/150-212	-70+100	0.212-0.150	.0083 - .0059	\$6.50	\$5.85	40 lbs.
GL0191B4/125-180	-80+120	0.180-0.125	.0070 - .0049	\$6.50	\$5.85	40 lbs.
GL0191B4/106-150	-100+140	0.150-0.106	.0059 - .0041	\$7.15	\$6.50	35 lbs.
GL0191B4/90-125	-120+170	0.125-0.090	.0049 - .0035	\$7.15	\$6.50	35 lbs.
GL0191B4/75-106	-140+200	0.106-0.075	.0041 - .0029	\$7.15	\$6.50	35 lbs.
GL0191B4/63-90	-170+230	0.090-0.063	.0035 - .0024	\$7.15	\$6.50	35 lbs.
GL0191B4/53-75	-200+270	0.075-0.053	.0029 - .0021	\$9.50	\$8.55	27 lbs.
GL0191B4/45-63	-230+325	0.063-0.045	.0024 - .0017	\$10.50	\$9.45	24 lbs.
GL0191B4/38-53	-270+400	0.053-0.038	.0021 - .0015	\$15.25	\$13.75	17 lbs.
GL0191B4/13-45	-325	0.045-0.013	- 0.0017	\$24.50	\$22.25	11 lbs.
GL0191B4/1-38	-400	0.038-0.001	- 0.0015	\$36.50	\$32.85	7 lbs.